

CERTIFIED LAND CORNER RECORDATION

DESCRIPTION OF CORNER EVIDENCE FOUND, AND ORIGINAL RECORD (if known)

LOCATION Found standard G.L.O. brass cap monument 4" below road surface.

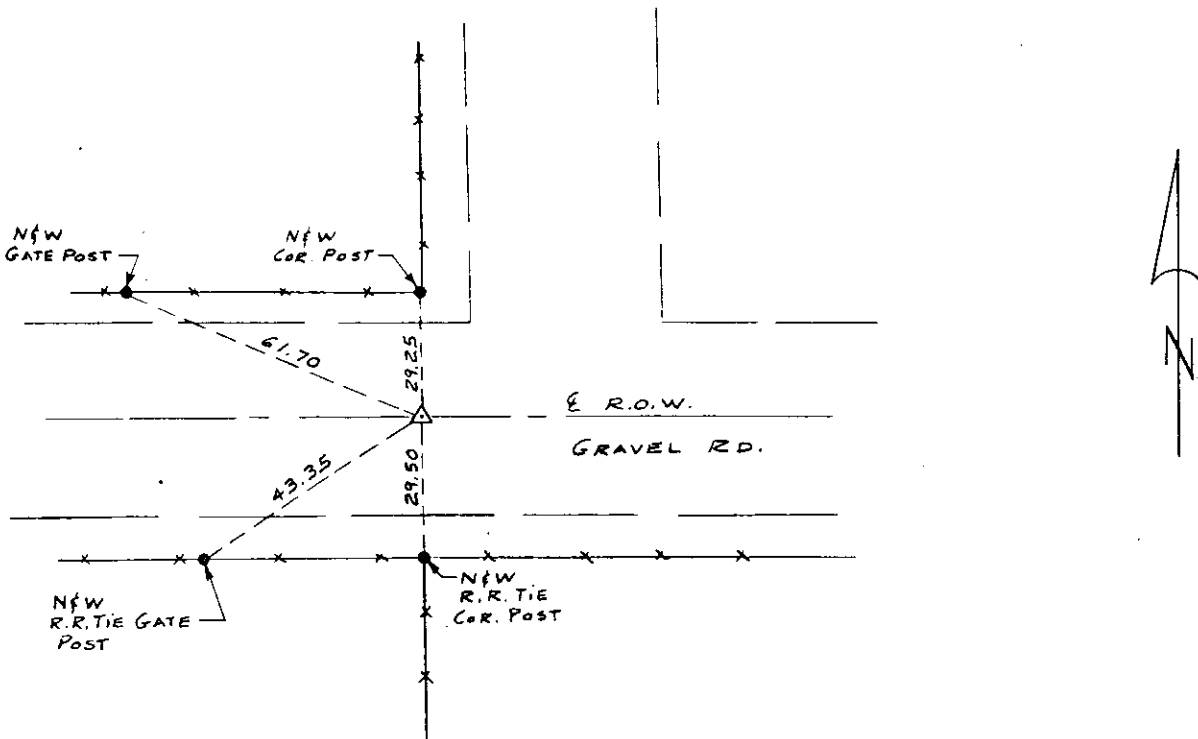
1/4
S.10 S.15

T.12N., R.62W.

DESCRIPTION OF MONUMENT AND ACCESSORIES ESTABLISHED TO PERPETUATE THE ORIGINAL LOCATION OF THIS CORNER:

See ties below.

SKETCH, WITH COURSE AND DISTANCE TO ADJACENT CORNER IF DETERMINED IN THIS SURVEY.
(May Sketch or Paste Reproduction on Reverse Side.)



I, JOHN A. STELL certify that I have carefully performed or reviewed the work done on the diagrammed corner as reported on this recordation form and approve the same.

John A. Stell
Signature of Surveyor

2500
Registration No.

STATE OF WYOMING,
Office of Clerk and Recorder,
County of Terrance

568002

This "corner record" was filed for record on the day of FEB 5 1980, 19 , was noted on the cross-index plat and is assigned page No. , in book No.

James C. Whitehead
County Official

Cross Index No.	T. <u>15</u>	R. <u>12</u>	Mer.
	T. <u>12</u>	R. <u>102</u>	Mer.
	T. _____	R. _____	Mer.
	T. _____	R. _____	Mer.
	T. _____	R. _____	Mer.
	T. _____	R. _____	Mer.
	T. _____	R. _____	Mer.

J-15 12-62

